

AI-Driven Relocation Management Solutions:

Deliver More with Less

Powered by **CORE**[™]
TECH



CapRelo

CapRelo Mobility Technology Powered by CoreTech

CapRelo's AI Relocation Solutions, powered by CoreTech, transform mobility programs from reactive service models into a proactive workforce strategy. CoreTech applies intelligence across policies, data, and workflows to bring automation, clarity, and insight to every stage of relocation. Moves become more predictive, more personalized, and easier to manage at scale.



The Challenge

Global mobility teams are overwhelmed by complexity.

- Data is scattered across systems, reports, and documents
- Manual processes slow decision-making and increase risk
- Consultants spend hours answering repetitive questions
- Transferees face uncertainty during a high-stress life event

Traditional dashboards add more information but not more clarity. CoreTech was designed to change that.

THE CORETECH DIFFERENCE

AI That Understands Mobility

CoreTech does not just analyze data. It understands it.

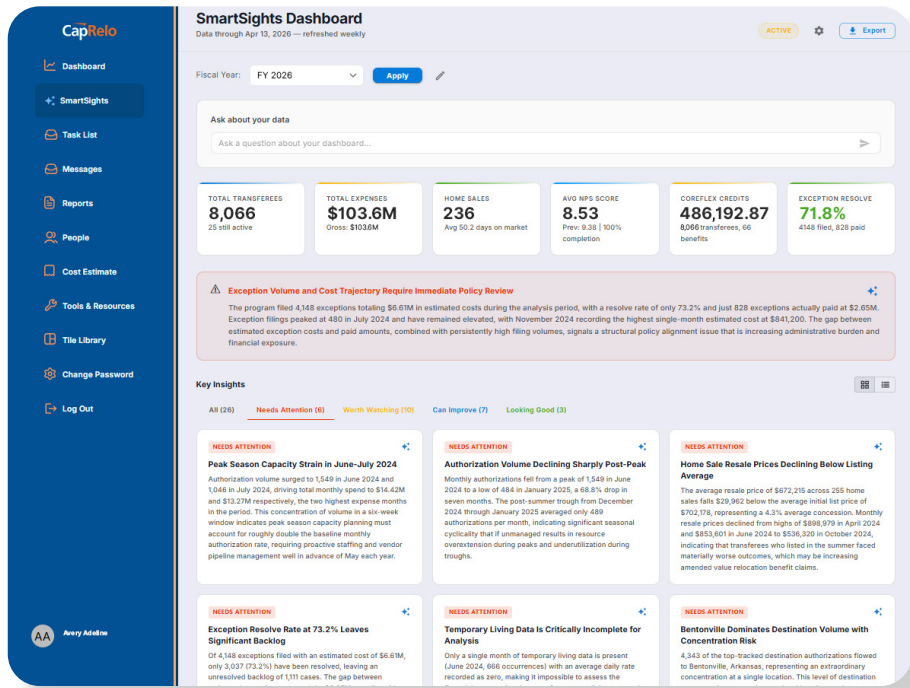
- Turns static documents into dynamic, conversational answers
- Transforms hundreds of data points into clear, contextual summaries
- Infers intent to reduce repetitive inputs and hand-offs
- Orchestrates actions across systems instead of relying on manual workflows

Every CoreTech-powered capability shares the same intelligence layer, ensuring consistency, accuracy and continuous learning across the entire relocation ecosystem.

Employer Portal Capabilities

Smart Relocation Summaries

Instantly synthesize hundreds of relocation data points into concise, human-readable transferee-level insights, enhanced with AI-driven sentiment analysis to understand the transferee experience at a glance.



AI File Comparison Tool

Automatically compare contracts, home valuations, and policies for alignment, consistency, and changes. Reduce review time and human error.

SmartSights Program Intelligence

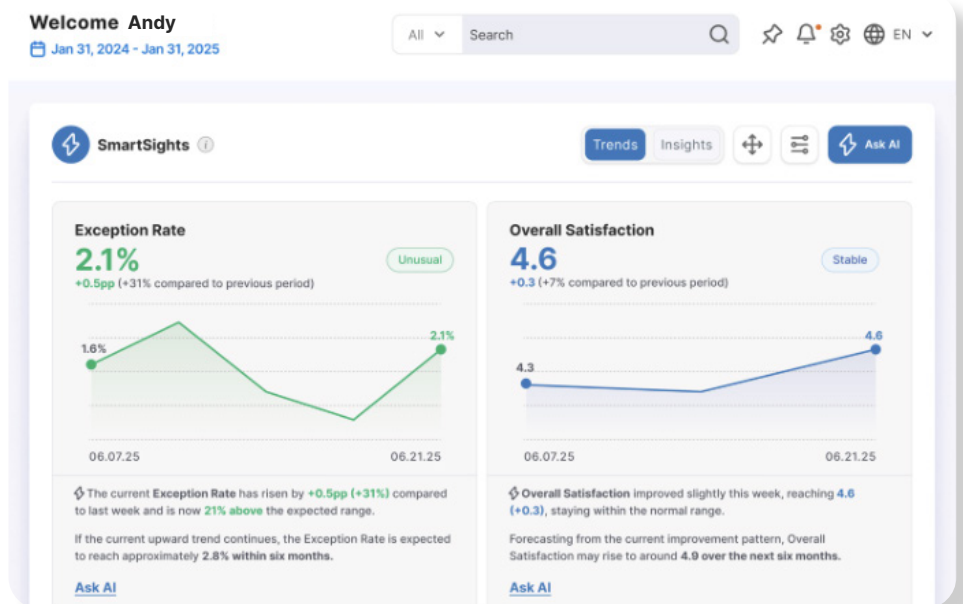
Surface population-level trends, emerging risks, and performance insights without manual analysis.

Document-Aware Search

Pulls answers not only from system data but also from emails and attachments.

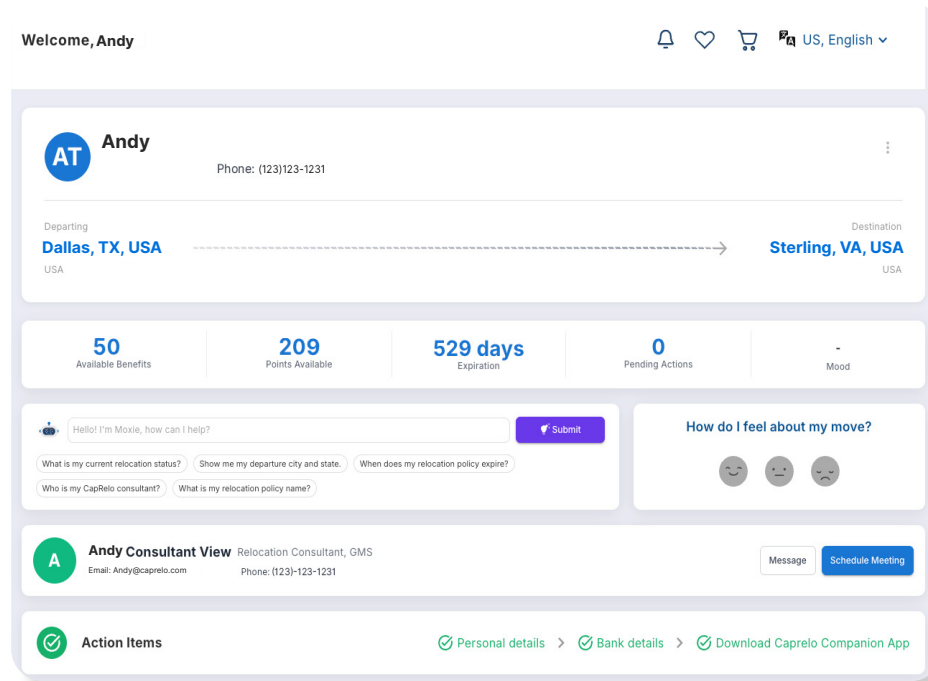
Redesigned Companion Portal

The Favorite Reports file offers quick access to saved insights
The task list highlights unfinished authorizations



AI-Enhanced Transferee Experience

Companion Portal



Centralizes relocation data and delivers on-demand intelligence directly to employees

Offers access to real-time household goods shipping and inventory

Provides AI-driven assistance with expense report submissions

Delivers curated destination information

Enables fast navigation and a clean user experience.

Moxie Transferee Concierge

Moxie is an AI-powered relocation assistant embedded directly into the Companion experience.

Available 24/7 for personalized, accurate guidance

Access real-time status, policy, task, and destination data

Anticipates needs instead of waiting for questions

For employees, Moxie delivers reassurance clarity, and momentum.

Measurable Business Impact

Fewer questions and faster understanding for HR teams

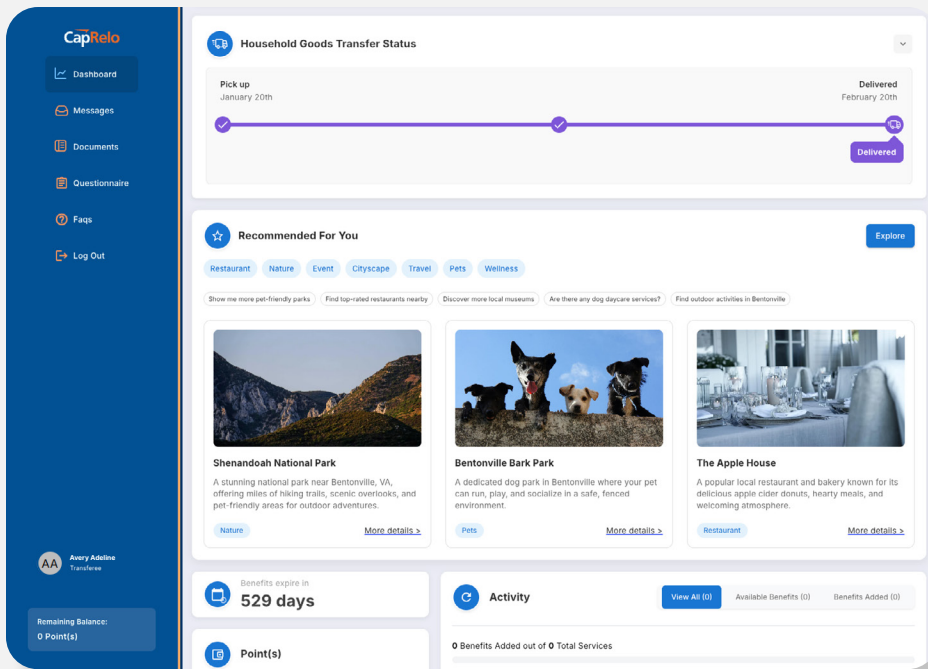
Reduced manual effort across reporting, policy management, and document review

Improved consultant capacity through AI-driven workload balancing

Smoother, more confident transferee experiences

On average, a relocating employee engages a consultant for 15-30 hours and asks 25-50 questions during their move. CoreTech absorbs much of that load while maintaining service quality and personalization.

What's Coming Next



CoreTech continues to evolve with expanded AI capabilities across the relocation life cycle.

- Destination intelligence, including schools, neighbourhoods, and commute insights
- Automated AI-driven business review insights designed to support the collection and synthesis of program results for business reviews
- Expanded predictive intelligence across all relocation workflows

Built for the Future of Mobility

Whether you are an HR leader, talent mobility strategist, or benefits decision-maker, CapRelo's AI Relocation Solutions powered by CoreTech deliver smarter insights, reduced friction, and better outcomes for both your teams and your employees.

Relocations made simpler. Decisions made smarter. Experiences made better.



Learn more by visiting: caprelo.com



CapRelo